

Ball valve, 2-part design Serie MKHV Type 250



Stainless steel ball valve, 2-parts, thread connection, full bore, PN63.

Connection: female thread acc. ISO 228/1.

Hand lever with body stop.

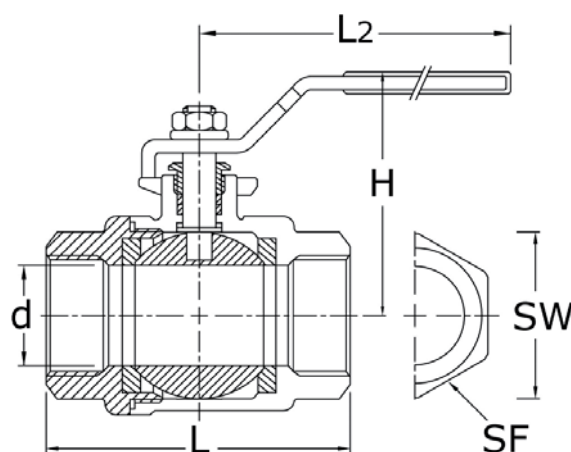
Shaft seal: PTFE-stuffing box, ball seat: PTFE

Casing made of investment cast, stainless steel 1.4408 [316ss], good resistance against aggressive liquids.

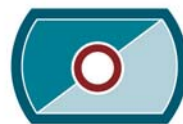
Ball material 1.4408, floating ball design, bi-directional.

Full, free bore, provides ideal flow characteristic.

Operating temperature: -10°C to +180°C [depends on pressure].



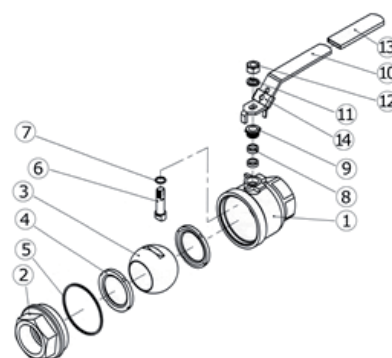
DN	G	L	L2	H	d	SW	SF	Cv	kg
8	1/4"	48	97	48	11,6	17	6-kant	6	0,168
10	3/8"	48	97	48	12,5	22	6-kant	7	0,178
15	1/2"	58	97	52	15	25	6-kant	10	0,257
20	3/4"	64	119	64	20	31	6-kant	25	0,395
25	1"	77	148	70	25	38	6-kant	35	0,580
32	1 1/4"	90	144	74	32	47	6-kant	46	1,159
40	1 1/2"	97	184	87	38	53	6-kant	80	1,720
50	2"	121	190	96	50	63	6-kant	110	2,441
65	2 1/2"	145	240	120	65	82	6-kant	310	4,761
80	3	170	225	157	80	97	6-kant	360	7,009



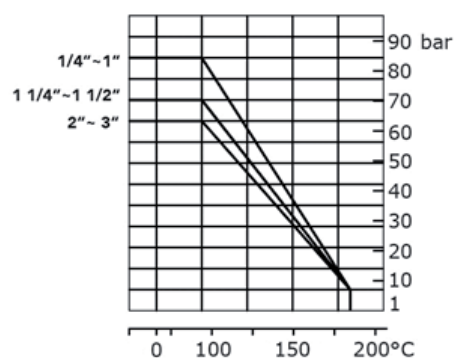
Ball valve, 2-part design Serie MKHV Type 250

Drawing / Bill of materials

Item Nr.	Discription	Material
1	Casing	1.4408
2	End connection	1.4408
3	Ball	1.4408
4	Ball seat ring	PTFE
5	Shaft seal	PTFE
6	Stem	1.4408
7	Clamping ring	PTFE
8	Stem seal	PTFE
9	Stuffing box	1.4301
10	Hand lever	1.4301
11	Lock washer	1.4301
12	Nut	1.4301
13	Hand guard	PVC



Pressure-Temperature Diagramm



Ball valves form series MKHV are equipped with PTFE seals and are not suitable for steam.

Technical specifications subject to change without notice